

PENNSYLVANIA'S EQUALITY PROFILE

Quick Facts About Pennsylvania

Percent of Adults
(18+)
Who are LGBTQ

4.1%

Gallup/Williams 2019

Total LGBTQ
Population (13+)

490,000

Williams 2020

Percent of Workforce
That is LGBTQ

5%

Census 2018; Williams
2020

Total LGBTQ
Workers

307,000

Williams 2020

Percent of LGBTQ
Adults (25+) Raising
Children

27%

Gallup/Williams 2019

Pennsylvania's LGBTQ Policy Tally



Sexual Orientation Policy

Tally:

6.5/23



FAIR

Gender Identity Policy

Tally:

10.25/26



FAIR

Overall Tally:

16.75/49

FAIR







MAP's "LGBTQ Policy Tally" examines each state's LGBTQ policy climate, as measured by over 50 pro- or anti-LGBTQ laws and policies. These laws are grouped into seven major categories: relationship and parental recognition; non-discrimination; religious exemptions; LGBTQ youth; healthcare; criminal justice; and the ability for transgender people to correct name and gender markers on identity documents. See the state's full profile for more detailed information.

Scores as of 04/24/2025. For full state profile, visit: https://www.mapresearch.org/equality_maps/profile_state/PA

Recommended citation: Movement Advancement Project. 2025. "State Equality Profile: Pennsylvania."
https://www.mapresearch.org/equality_maps/profile_state/PA. Accessed April 24, 2025.

Pennsylvania's LGBTQ Laws and Policies

Click on each issue for more information and to see where the state fits into the national landscape.

KEY		Indicates state law or policy		Indicates local laws or policies and/or partial law
		Indicates no law or policy		Enumeration not applicable

Relationship and Parental Recognition	Sexual Orientation		Gender Identity	
	Law Exists?	Tally	Law Exists?	Tally
<p>As a result of the 2015 U.S. Supreme Court decision in Obergefell, same-sex couples can marry nationwide and states must extend all the rights and benefits of marriage to same-sex couples. As a result, the following benefits are available to all married same-sex couples on the same basis they are available to married different-sex couples:</p> <div><div>✔</div>Marriage for Same-Sex Couples</div> <div><div>✔</div>Medical Decision-Making Authority for Married Same-Sex Couples</div> <div><div>✔</div>Stepparent Adoption for Married Same-Sex Couples</div> <div><div>✔</div>Joint Adoption for Married Same-Sex Couples</div>	<div>✔</div>	1/1	<div>—</div>	<div>—</div>
Second-Parent Adoption for Unmarried Couples	<div>✔</div>	1/1	<div>—</div>	<div>—</div>
Confirmatory Adoption	<div>✖</div>	0/1	<div>—</div>	<div>—</div>
Voluntary Acknowledgement of Parentage (VAP)	<div>✖</div>	0/1	<div>—</div>	<div>—</div>
Family Services Nondiscrimination Laws				
Adoption Nondiscrimination Protections for LGBTQ Parents	<div>✖</div>	0/0.5	<div>✖</div>	0/0.5
Foster Care Nondiscrimination Protections for LGBTQ Parents	<div>✖</div>	0/0.5	<div>✖</div>	0/0.5
Recognition for Parents Using Assisted Reproduction	<div>✖</div>	0/1	<div>—</div>	<div>—</div>
State Family Leave Laws				
LGBTQ-Inclusive Definitions of Spouse/Partner	<div>✖</div>	0/0.5	<div>—</div>	<div>—</div>
LGBTQ-Inclusive Definitions of Children/Parents	<div>✖</div>	0/0.5	<div>—</div>	<div>—</div>
Subtotal	2/7		0/1	
Relationship and Parental Recognition Total	2/8			

State Nondiscrimination Laws	Sexual Orientation		Gender Identity	
	Law Exists?	Tally	Law Exists?	Tally
As a result of a June 2020 U.S. Supreme Court ruling, people in all states can seek recourse for employment discrimination based on sexual orientation and gender identity through the federal Equal Employment Opportunity Commission and federal courts.				
Employment Nondiscrimination Laws*	✓	0.75/1	✓	0.75/1
Housing Nondiscrimination Laws*	✓	0.75/1	✓	0.75/1
Public Accommodations Nondiscrimination Laws*	✓	0.75/1	✓	0.75/1
Credit and Lending Nondiscrimination Laws	✗	0/1	✗	0/1
Nondiscrimination Policies for State Employees	✓	0.5/0.5	✓	0.5/0.5
Negative Law: State Bans Cities and Counties from Passing Nondiscrimination Laws	No Negative Law	0/-1	No Negative Law	0/-1
Negative Law: State Bans Transgender People From Using Bathrooms or Facilities Consistent With Their Gender Identity In Government-Owned Buildings			No Negative Law	0/-1
Negative Law: State Explicitly Defines “Sex” Throughout State Law To Exclude Transgender People			No Negative Law	0/-1
Subtotal	2.75/4.5		2.75/4.5	
Nondiscrimination Total	5.5/9			

*If state lacks statewide law, tally looks at local Nondiscrimination ordinances in employment, housing, and public accommodations and provides partial points based on percent of LGBTQ population covered by local laws.

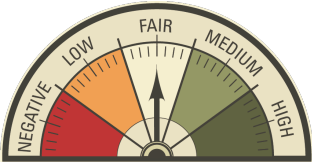
Religious Exemption Laws	Sexual Orientation		Gender Identity	
	Law Exists?	Tally	Law Exists?	Tally
Negative Law: Broad "RFRA" or Religious Exemption Law	NEGATIVE LAW	-0.5/-0.5	NEGATIVE LAW	-0.5/-0.5
Negative Law: Targeted Religious Exemption for Child Welfare Services	No Negative Law	0/-1	No Negative Law	0/-1
Negative Law: Targeted Religious Exemption for Medical Professionals	No Negative Law	0/-1	No Negative Law	0/-1
Negative Law: Targeted Wedding Services				
Private Wedding Services	No Negative Law	0/-0.5	—	—
State and Local Officials Providing Marriage Licenses	No Negative Law	0/-0.5	—	—
Subtotal	-0.5/-3.5		-0.5/-2.5	
Religious Exemption Laws Total	-1/-6			

LGBTQ Youth Laws and Policies	Sexual Orientation		Gender Identity	
	Law Exists?	Tally	Law Exists?	Tally
Nondiscrimination Laws and Policies Covering LGBTQ Students	<div>✓</div>	0.75/1	<div>✓</div>	0.75/1
Anti-Bullying Laws and Policies Covering LGBTQ Students	<div>✗</div>	0/1	<div>✗</div>	0/1
Negative Law: Laws Banning Local Schools and Districts from Passing LGBTQ Nondiscrimination and/or Anti-Bullying Policies	No Negative Law	0/-1	No Negative Law	0/-1
State Curricular Standards Required to Be LGBTQ-Inclusive	<div>✗</div>	0/1	<div>✗</div>	0/1
Negative Law: "Don't Say LGBTQ" Law Barring or Explicitly Restricting Educators From Discussing LGBTQ People or Issues in Schools	No Negative Law	0/-1	No Negative Law	0/-1
Negative Law: State Law Requires Parental Notification of LGBTQ-Inclusive Curricula and Allows Parents to Opt Children Out	No Negative Law	0/-1	No Negative Law	0/-1
Negative Law: State Law Restricts Discussions of "Homosexuality" in Specific School Subjects	No Negative Law	0/-0.5	—	—
Negative Law: State Law Prevents Transgender Students from Participating in Sports Consistent With Their Gender Identity	—	—	No Negative Law	0/-1
Negative Law: State Law Prevents Transgender Students from Using School Facilities Consistent With Their Gender Identity	—	—	No Negative Law	0/-1
Negative Law: Forced Outing of Transgender Youth in Schools	—	—	No Negative Law	0/-1
Conversion Therapy Ban Covering LGBTQ Youth	<div>✓</div>	1/1	<div>✓</div>	1/1
Protections for LGBTQ Youth in the Child Welfare System	<div>✗</div>	0/1	<div>✗</div>	0/1
Subtotal	1.75/5		1.75/5	
LGBTQ Youth Laws Total	3.5/10			

Healthcare Laws and Policies	Sexual Orientation		Gender Identity	
	Law Exists?	Tally	Law Exists?	Tally
Private Health Insurance Nondiscrimination Laws	<div>✗</div>	0/1	<div>✓</div>	1/1
Negative Law: Ban on Best Practice Medical Care for Transgender Youth	<div>—</div>	<div>—</div>	No Negative Law	0/-1
"Shield" Laws Protecting Access to Transgender Health Care	<div>—</div>	<div>—</div>	<div>✗</div>	0/1
Health Insurance Providers Banned from Excluding Coverage for Transgender-Specific Care	<div>—</div>	<div>—</div>	<div>✓</div>	1/1
State Medicaid Policy Related to Coverage for Transgender People	<div>—</div>	<div>—</div>	<div>✓</div>	1/1
Transgender Inclusive Health Benefits for State Employees	<div>—</div>	<div>—</div>	<div>✓</div>	0.5/0.5
Data Collection				
LGBTQ Adults	<div>✓</div>	0.5/0.5	<div>✓</div>	0.5/0.5
LGBTQ Youth	<div>✓</div>	0.5/0.5	<div>✓</div>	0.5/0.5
Fertility Treatment Coverage in Private Insurance	<div>✗</div>	0/1	<div>✗</div>	0/1
Fertility Treatment Coverage in Medicaid	<div>✗</div>	0/0.5	<div>✗</div>	0/0.5
Fertility Preservation Coverage in Private Insurance	<div>—</div>	<div>—</div>	<div>✗</div>	0/1
Fertility Preservation Coverage in Medicaid	<div>—</div>	<div>—</div>	<div>✗</div>	0/0.5
Subtotal	1/3.5		4.5/8.5	
Healthcare Total	5.5/12			

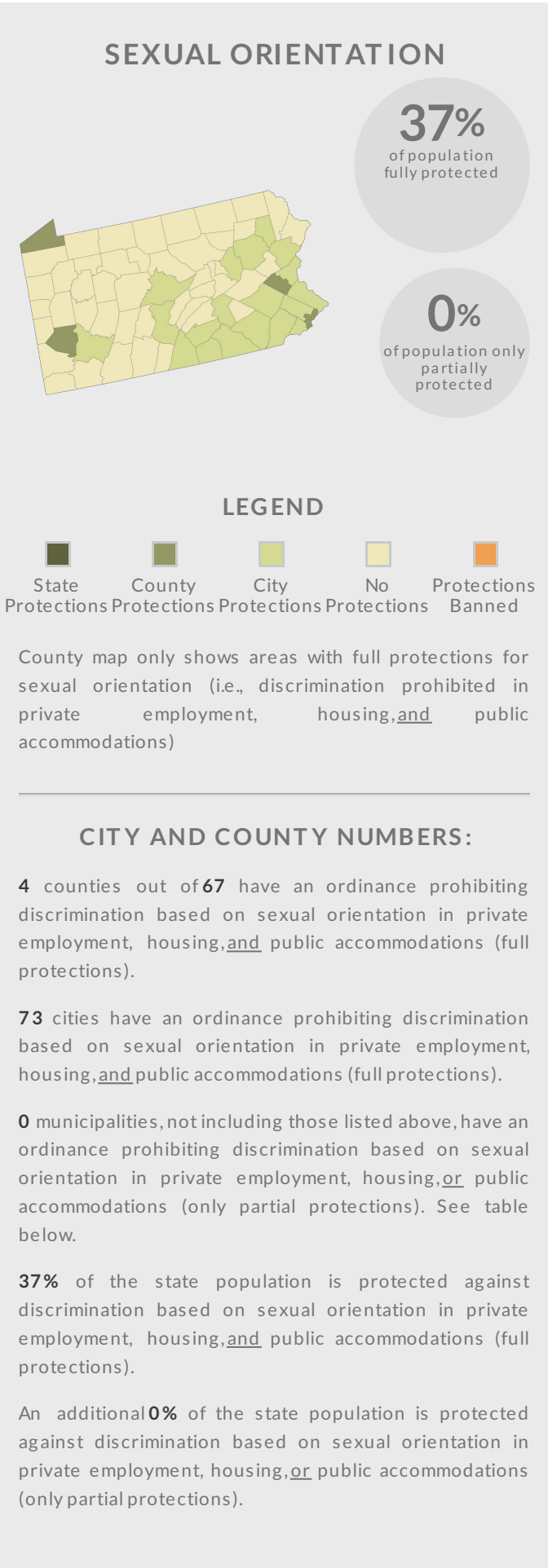
Criminal Justice Laws and Policies	Sexual Orientation		Gender Identity	
	Law Exists?	Tally	Law Exists?	Tally
Hate Crime Law Covering LGBTQ People	<div>✗</div>	0/1	<div>✗</div>	0/1
Ban on Panic Defense	<div>✗</div>	0/1	<div>✗</div>	0/1
Jury Service Nondiscrimination	<div>✗</div>	0/1	<div>✗</div>	0/1
Negative Law: HIV Criminalization Law	NEGATIVE LAW	-0.5/-1	NEGATIVE LAW	-0.5/-1
Negative Law: Restrictions on Drag Performances	No Negative Law	0/-1	No Negative Law	0/-1
Subtotal	-0.5/3		-0.5/3	
Criminal Justice Total	-1/6			

Ability for Transgender People to Correct Name and Gender Marker on Identity Documents	Sexual Orientation		Gender Identity	
	Law Exists?	Tally	Law Exists?	Tally
Changing Gender Marker on Driver's Licenses	—	—	✓	1/1
Changing Gender Marker on Birth Certificates	—	—	✓	0.75/1
Gender Neutral Options				
"X" Option on Driver's Licenses	—	—	✓	0.5/0.5
"X" Option on Birth Certificates	—	—	✗	0/0.5
Name Change Process	—	—	✗	0/1
Subtotal	—		2.25/4	
Identity Documents Total	2.25/4			



Grand Totals	Sexual Orientation Policy Tally	Gender Identity Policy Tally	Overall Tally
Totals	6.5/23	10.25/26	16.75/49
Ratings	FAIR	FAIR	FAIR

Local Nondiscrimination Ordinances





CITY AND COUNTY LISTING:

	Fully inclusive SO/GI protections	Local Sexual Orientation Protections			Local Gender Identity Protections		
		Employment	Housing	Public Accom.	Employment	Housing	Public Accom.
Allegheny County	✓	✓	✓	✓	✓	✓	✓
Erie County	✓	✓	✓	✓	✓	✓	✓
Lehigh County	✓	✓	✓	✓	✓	✓	✓
Philadelphia City-County	✓	✓	✓	✓	✓	✓	✓
Abington Township	✓	✓	✓	✓	✓	✓	✓
Allentown	✓	✓	✓	✓	✓	✓	✓
Ambler	✓	✓	✓	✓	✓	✓	✓
Aspinwall	✓	✓	✓	✓	✓	✓	✓
Bethlehem	✓	✓	✓	✓	✓	✓	✓
Bloomsburg	✓	✓	✓	✓	✓	✓	✓
Bridgeport	✓	✓	✓	✓	✓	✓	✓
Bristol	✓	✓	✓	✓	✓	✓	✓
Camp Hill	✓	✓	✓	✓	✓	✓	✓
Carlisle	✓	✓	✓	✓	✓	✓	✓
Cheltenham Township	✓	✓	✓	✓	✓	✓	✓
Collegeville	✓	✓	✓	✓	✓	✓	✓
Conshohocken	✓	✓	✓	✓	✓	✓	✓
Crafton	✓	✓	✓	✓	✓	✓	✓
Dickson City	✓	✓	✓	✓	✓	✓	✓
Dormont	✓	✓	✓	✓	✓	✓	✓
Downingtown	✓	✓	✓	✓	✓	✓	✓
Doylestown	✓	✓	✓	✓	✓	✓	✓
East Norriton Township	✓	✓	✓	✓	✓	✓	✓
Easton	✓	✓	✓	✓	✓	✓	✓
Etna	✓	✓	✓	✓	✓	✓	✓
Gettysburg	✓	✓	✓	✓	✓	✓	✓
Harrisburg	✓	✓	✓	✓	✓	✓	✓
Hatboro	✓	✓	✓	✓	✓	✓	✓
Haverford Township	✓	✓	✓	✓	✓	✓	✓
Huntingdon	✓	✓	✓	✓	✓	✓	✓
Jenkintown	✓	✓	✓	✓	✓	✓	✓
Kennett Square	✓	✓	✓	✓	✓	✓	✓
Lancaster	✓	✓	✓	✓	✓	✓	✓
Lansdale	✓	✓	✓	✓	✓	✓	✓
Lansdowne	✓	✓	✓	✓	✓	✓	✓
Lower Gwynedd	✓	✓	✓	✓	✓	✓	✓

Lower Makefield Township	✓	✓	✓	✓	✓	✓	✓
Lower Merion Township	✓	✓	✓	✓	✓	✓	✓
Lower Providence Township	✓	✓	✓	✓	✓	✓	✓
Middletown Township	✓	✓	✓	✓	✓	✓	✓
Monessen	✓	✓	✓	✓	✓	✓	✓
Montgomery Township (Montgomery County)	✓	✓	✓	✓	✓	✓	✓
Mt. Lebanon Township	✓	✓	✓	✓	✓	✓	✓
Narberth	✓	✓	✓	✓	✓	✓	✓
New Hope	✓	✓	✓	✓	✓	✓	✓
Newtown Borough (Bucks County)	✓	✓	✓	✓	✓	✓	✓
Newtown Township (Bucks County)	✓	✓	✓	✓	✓	✓	✓
Norristown	✓	✓	✓	✓	✓	✓	✓
North Wales	✓	✓	✓	✓	✓	✓	✓
Phoenixville	✓	✓	✓	✓	✓	✓	✓
Pittsburgh	✓	✓	✓	✓	✓	✓	✓
Pittston	✓	✓	✓	✓	✓	✓	✓
Plymouth Township (Montgomery County)	✓	✓	✓	✓	✓	✓	✓
Reading	✓	✓	✓	✓	✓	✓	✓
Ross Township	✓	✓	✓	✓	✓	✓	✓
Royersford	✓	✓	✓	✓	✓	✓	✓
Scranton	✓	✓	✓	✓	✓	✓	✓
Sharpsburg	✓	✓	✓	✓	✓	✓	✓
Shippensburg Borough	✓	✓	✓	✓	✓	✓	✓
Springfield Township (Montgomery County)	✓	✓	✓	✓	✓	✓	✓
State College	✓	✓	✓	✓	✓	✓	✓
Stroudsburg	✓	✓	✓	✓	✓	✓	✓
Susquehanna Township	✓	✓	✓	✓	✓	✓	✓
Swarthmore	✓	✓	✓	✓	✓	✓	✓
Upper Dublin Township	✓	✓	✓	✓	✓	✓	✓
Upper Gwynedd Township	✓	✓	✓	✓	✓	✓	✓
Upper Merion Township	✓	✓	✓	✓	✓	✓	✓
Upper Moreland	✓	✓	✓	✓	✓	✓	✓
Upper Providence Township (Montgomery County)	✓	✓	✓	✓	✓	✓	✓
West Chester	✓	✓	✓	✓	✓	✓	✓
West Conshohocken	✓	✓	✓	✓	✓	✓	✓
West Norriton Township	✓	✓	✓	✓	✓	✓	✓
Whitemarsh Township	✓	✓	✓	✓	✓	✓	✓
Whitpain Township	✓	✓	✓	✓	✓	✓	✓
Wilkes-Barre	✓	✓	✓	✓	✓	✓	✓

Yardley	✔	✔	✔	✔	✔	✔	✔
York	✔	✔	✔	✔	✔	✔	✔

 - Local ordinance does not provide this protection, but county/state does

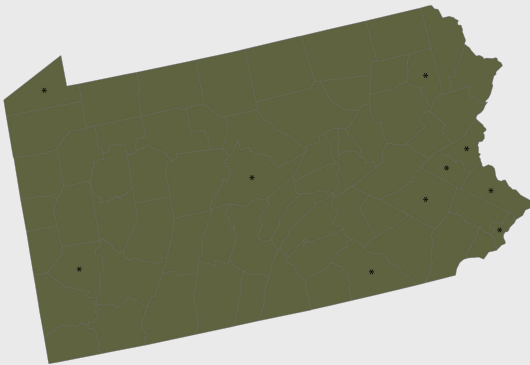
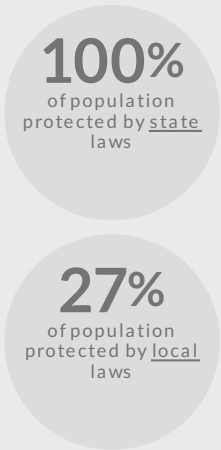
 - Local ordinance provides this protection

NOTE: Only jurisdictions with ordinances that prohibit discrimination in private employment are listed. Other localities may have executive orders that apply to government employees and these are not listed. The level of enforcement of these ordinances may vary by jurisdiction. This information is constantly changing, and we welcome suggestions for additions or changes. For questions regarding ordinances or any other aspect of the state profile, please contact MAP at info@mapresearch.org.

This data was collected in collaboration with the [Equality Federation](#), [Pennsylvania Youth Congress](#), and [Equality Pennsylvania](#) and is maintained by MAP.

Local Conversion Therapy Ordinances

CONVERSION THERAPY BANS



Note: Counties with *
have county or local
bans. These
municipalities are
also listed below.

LEGEND



CITY AND COUNTY NUMBERS:

2 counties out of 67 have an ordinance prohibiting conversion therapy for minors.
14 cities have an ordinance prohibiting conversion therapy for minors.

CITY AND COUNTY LISTING:

- Allentown
- Bellefonte Borough
- Bethlehem
- Doylestown Borough
- Erie
- Lower Makefield Township
- Middletown Township (Bucks County)
- Newtown Township (Bucks County)
- Pittsburgh
- Reading
- Scranton
- State College
- Yardley Borough
- York
- Allegheny County
- Philadelphia City-County